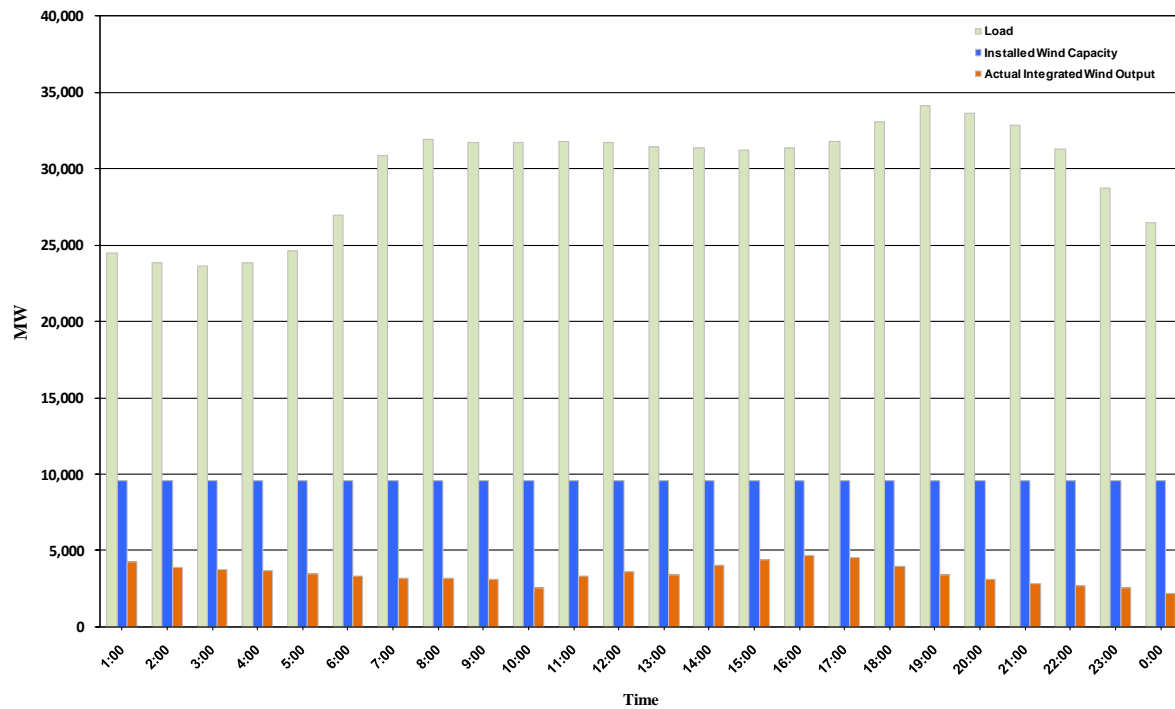




ERCOT Grid Operations Wind Integration Report: 11/15/10

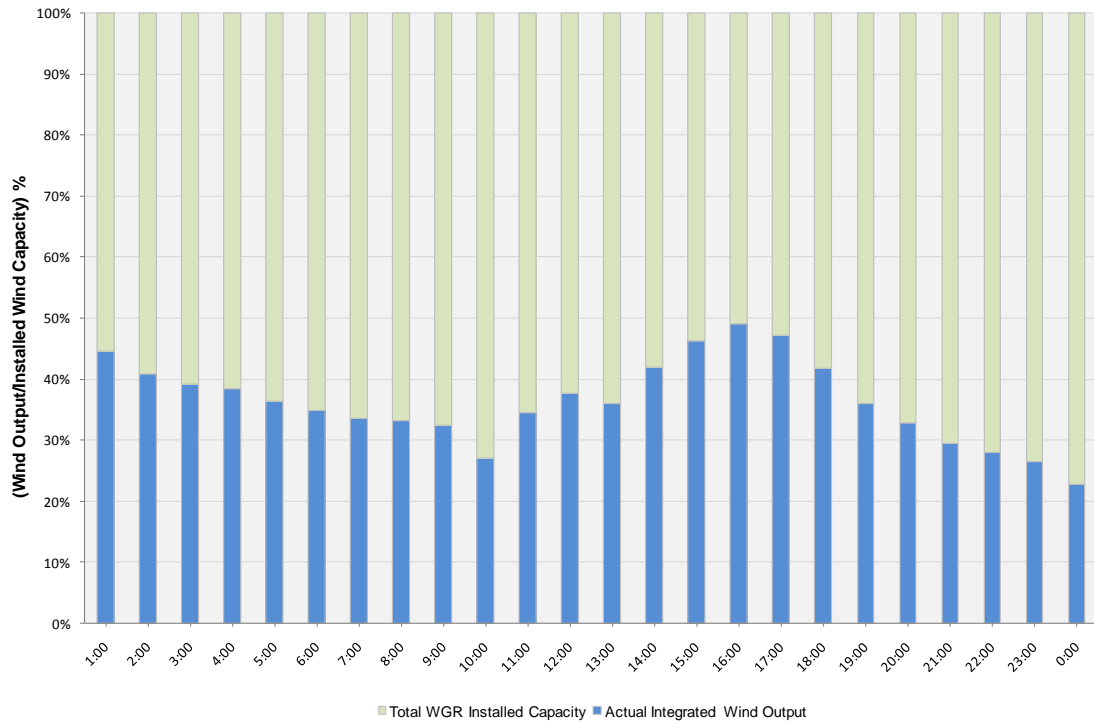
Peak Load	34,091 MW
Load Peak Hour	19
Wind Record 06/12/10	7016 MW
Max Wind value	4895 MW
Wind Peak Hour	16:16:04
Wind Integration %	15.49

Hourly Average Actual Load vs. Actual Wind Output
11-15-2010

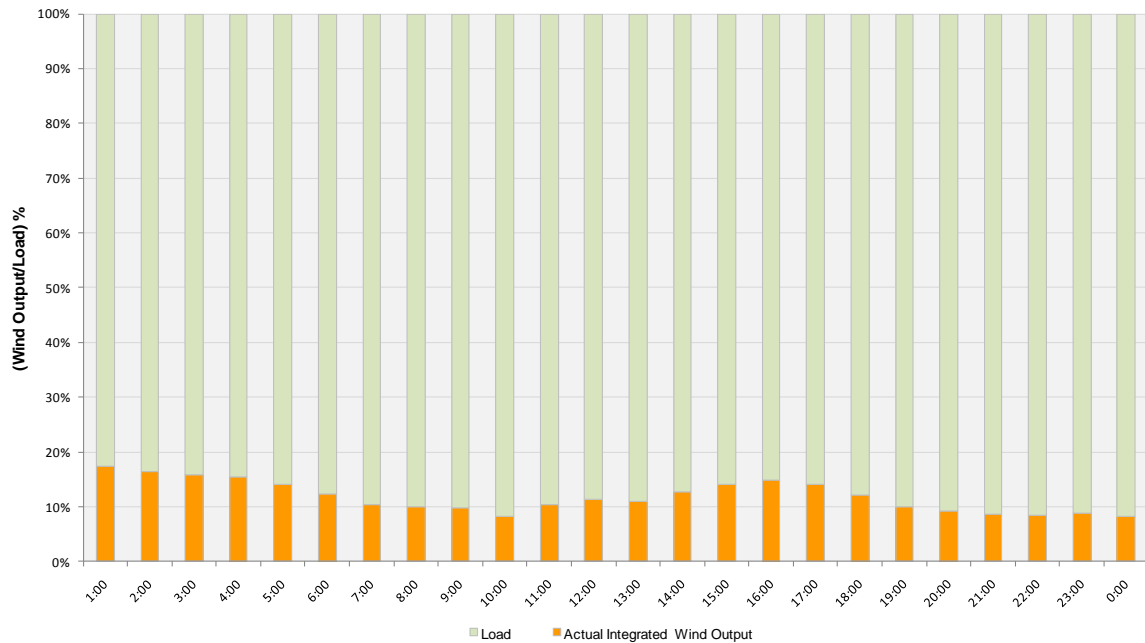




Actual Wind Output as a Percentage of the Total Installed Wind Capacity
11-15-2010



Actual Wind Output as a Percentage of the ERCOT Load
11-15-2010





ERCOT Load vs. Actual Wind Output 11/8/10 - 11/15/10

